

Social Inequities, Transportation, and Environmental & Climate Justice
Jacqui Patterson, NAACP

Human and Civil Rights

HUMAN RIGHTS

- Right to Self Determination
- Right to Safe and Healthy Work Conditions

- Right to Highest Standard of Physical and Mental Health
- Right to Food
- Right to a Decent Living Condition
- Equal Rights Between Men and Women
- Right of Youth and Children to be Free From Exploitation

CIVIL RIGHTS

- Ensuring peoples' physical integrity and safety.
- Protection from discrimination on grounds such as gender, religion, race, sexual orientation, national origin, age, immigrant status, etc.
- Equal access to health care, education, culture, etc.

What Are the Commons?

- Air
- Water
- Land
- Food
- Shelter
- Clothing
- Energy
- Education
- Work
- Health
- Safety
- Mobility

**The COMMONS
&
SACRIFICE ZONES**

?Who Accesses and Who Pays the Costs?

EXPOSURE



CAN YOU DO
THIS



WITH YOUR TAP WATER?





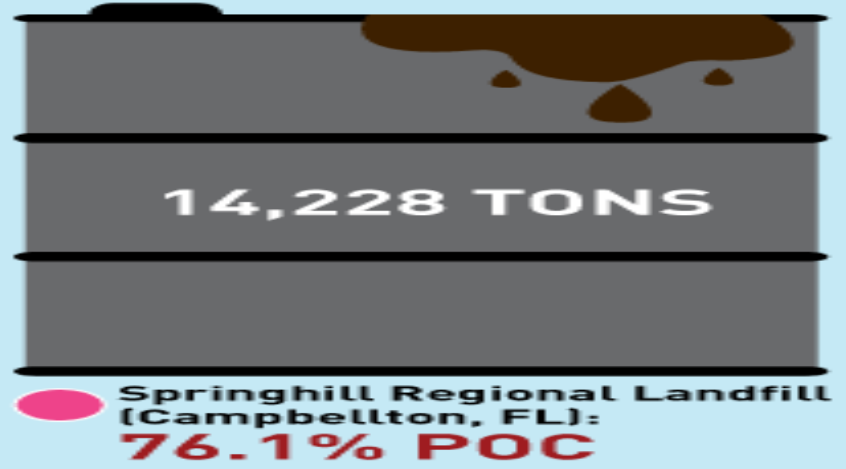
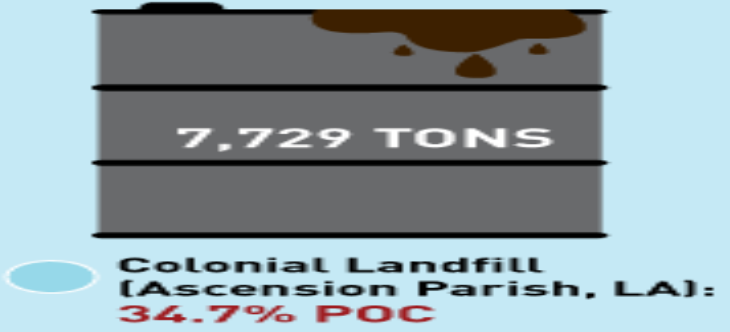
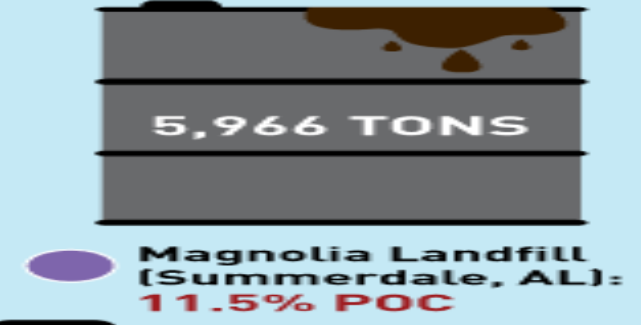
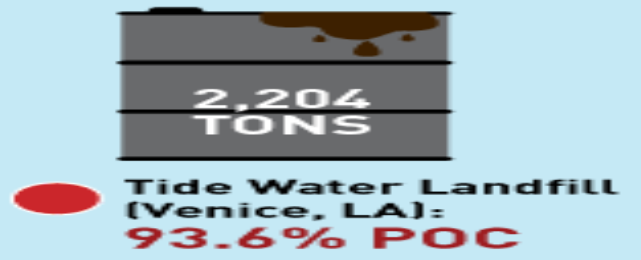
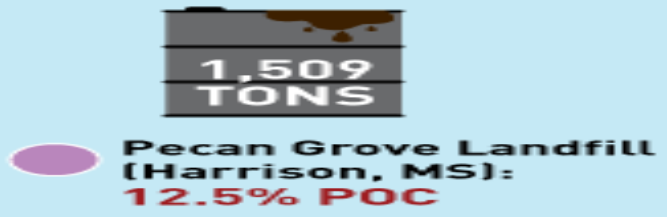
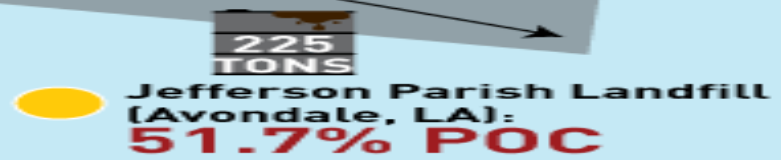








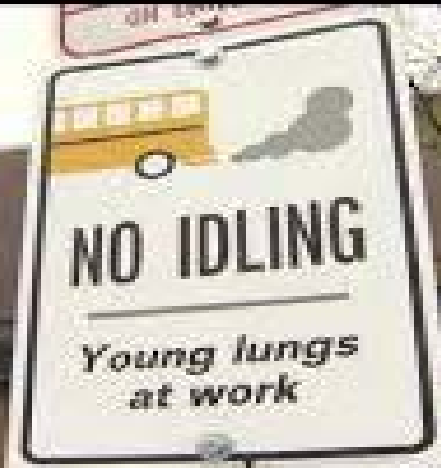
WASTE FROM BP OIL SPILL





Turn Off Your Engine

KIDS BREATHE
HERE





ACCESS







Employment and Mobility

96 percent of welfare recipients do not own a car.

Two-thirds of the job growth in the nation's metropolitan areas has taken place in the suburbs.



IMP

IMPACT



Health effects of pollution

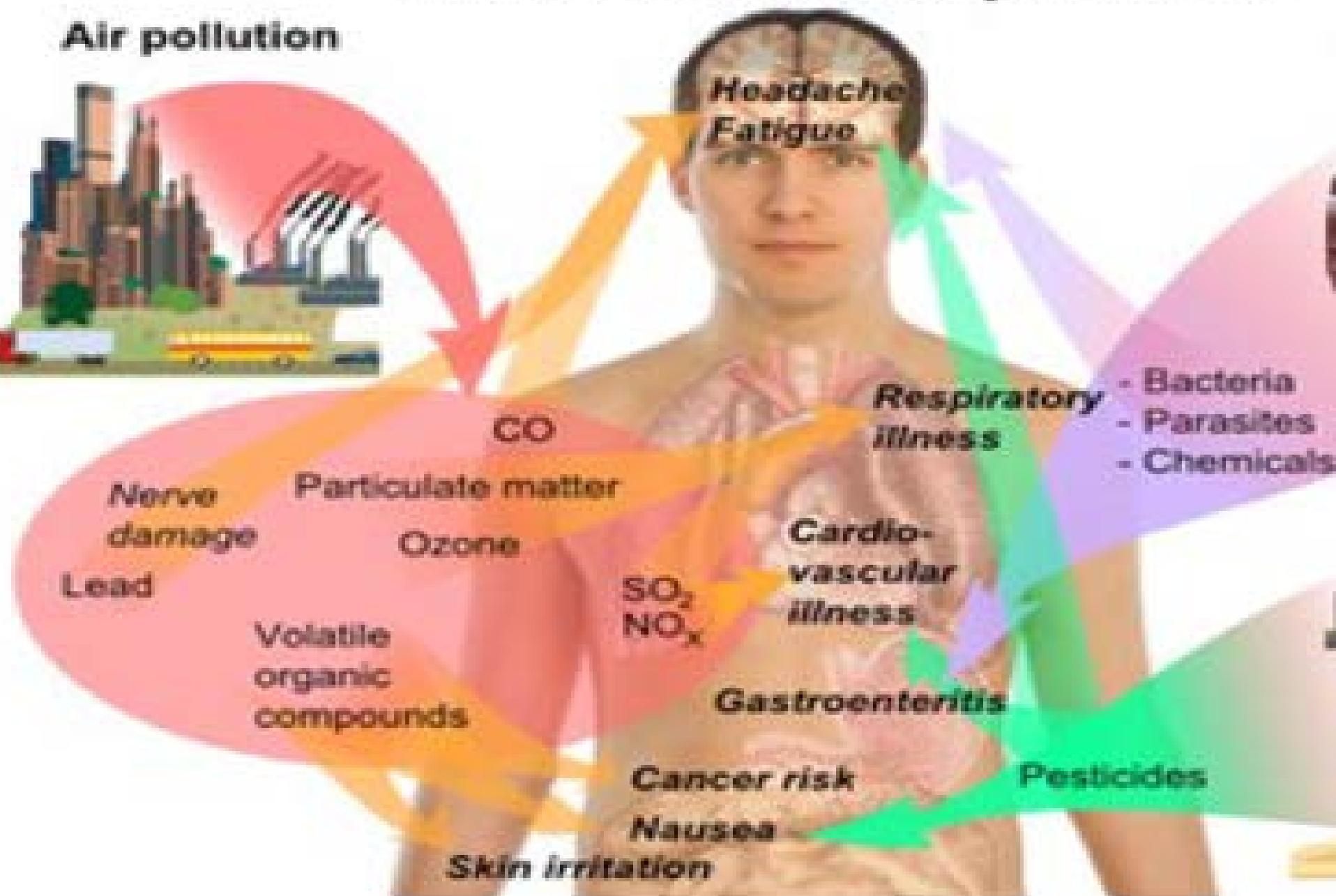
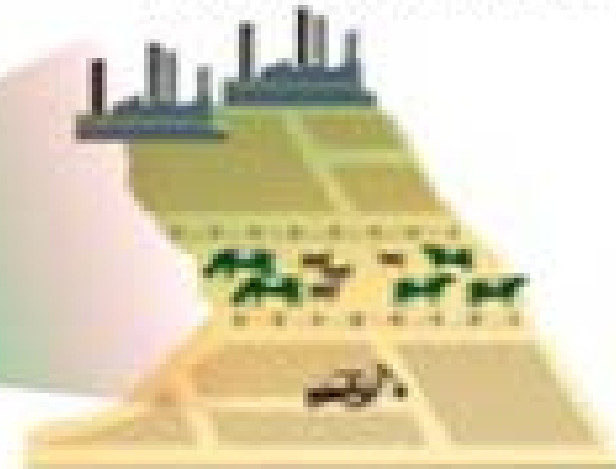
Air pollution



Water pollution



Soil contamination



YOU ARE HERE: LAT Home → Collections → Air Pollution

Advertisement

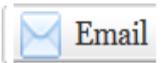
**GUARANTEED
TERMITE
PROTECTION**

AMERICA'S LEADING PROVIDER
OF PEST AND TERMITE
CONTROL SERVICES.

TERMINIX SCHEDULE YOUR
FREE INSPECTION

One-fifth of U.S. lives near roads with higher air pollution, study says

October 02, 2013 | By Tony Barboza



Nearly one-fifth of the U.S. population lives near a high-volume road where pollution levels are typically elevated from vehicle exhaust, a new study says.

The analysis found 60 million people living within about one-third of a mile from a busy road. In California, 40% of the population lives that close to traffic, the highest of any state.

“It’s a surprisingly large proportion of the population,” said Gregory Rowangould, a professor of engineering at the University of New Mexico who used U.S. Census and Department of Transportation traffic data to conduct the nationwide tally.



A University of New Mexico study found that nearly one-fifth of the U.S.... (Frederic J. Brown / AFP/Getty...)

FROM THE ARCHIVES

Chemicals in Home a Big Smog Source

March 9, 2003









During Hurricane Katrina, over 1,800 individuals died because they were unable to evacuate the city.

Persons with special health conditions and persons who were elderly, poor, or differently abled were the most likely to die.

Low-income African Americans often could not evacuate because they had no personal transportation.



Port Gibson—Grand Gulf



White People "FIND"




Two residents wade through chest-deep water after finding bread and soda from a local grocery store after Hurricane Katrina came through the area in New Orleans, Louisiana.

(AFP/Getty Images/Chris Graythen)

Black People "LOOT"



A young man walks through chest deep flood after looting a grocery store in New Orleans Tuesday, Aug. 30, 2005. Flood waters continue to rise in New Orleans after Hurricane Katrina caused extensive damage when it  Associated Press

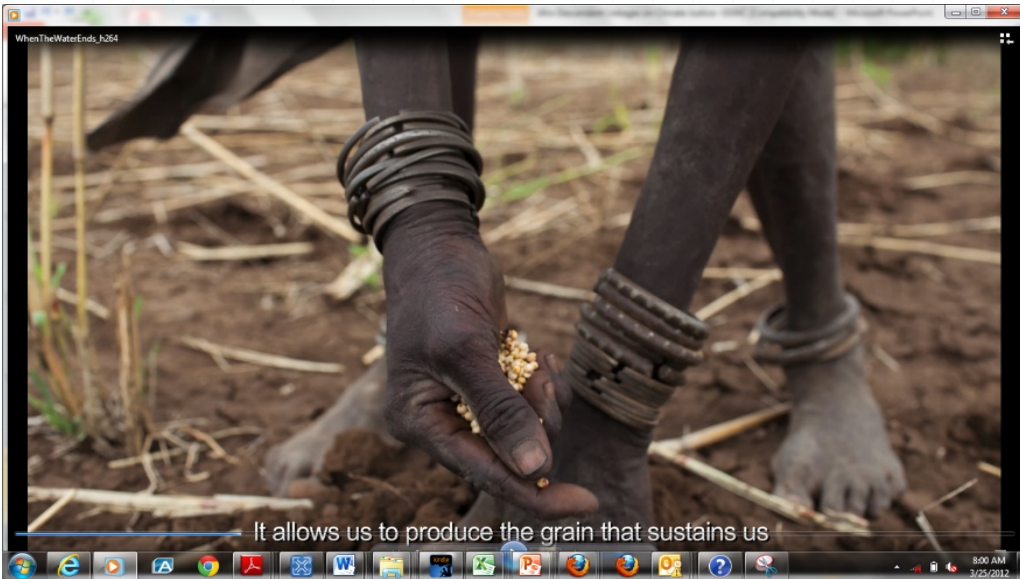
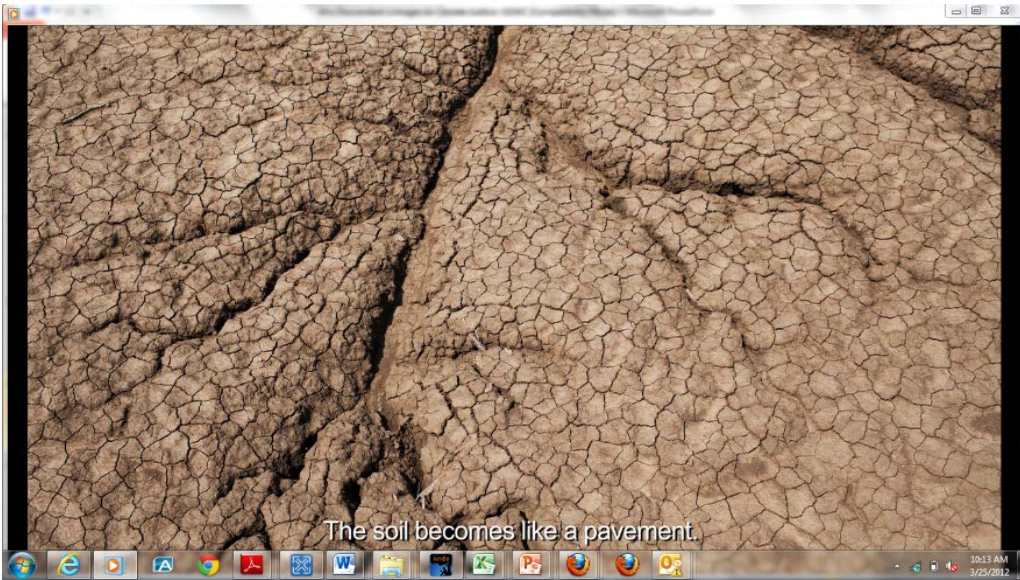
These stories and pictures both appeared on **YAHOO!** NEWS August 30, 2005

<http://news.yahoo.com/photo/050830/480/1adm1>

http://news.yahoo.com/photo/050830/photos_ts_afp/050830071

Criminalization







FALSE SOLUTIONS

***“All progress is precarious, and the solution of one problem brings us face to face with another problem.”
--Dr. Martin Luther King, Jr.***



OIL TRAINS AND
ENVIRONMENTAL JUSTICE
COMMUNITIES

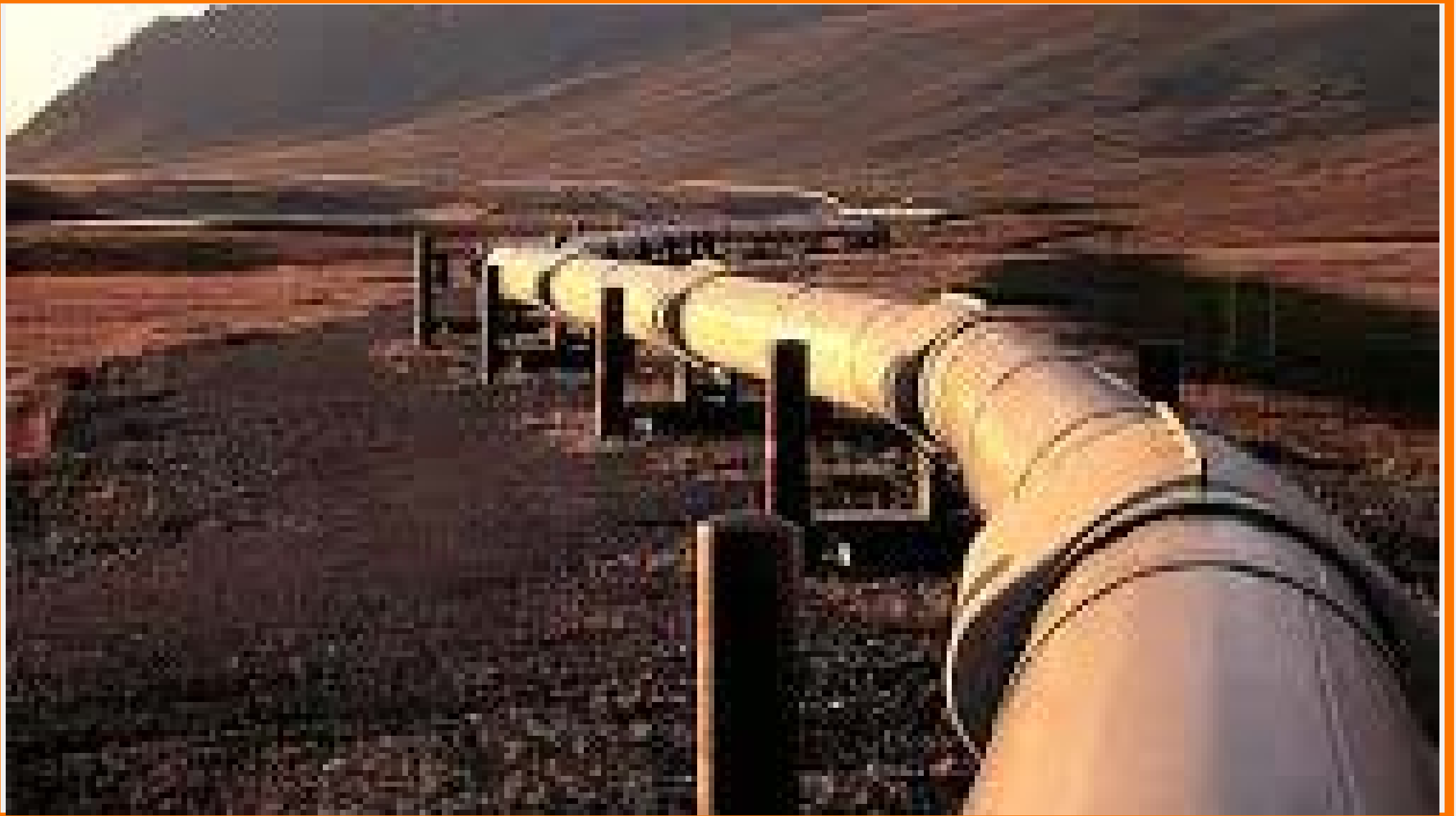
Stopping Danger In Its Tracks



Travel and transport

Health risks of shipping pollution have been 'underestimated'

One giant container ship can emit almost the same amount of cancer and asthma-causing chemicals as 50m cars, study finds



WE ARE HERE TO
PROTECT



**WATER
IS LIFE**

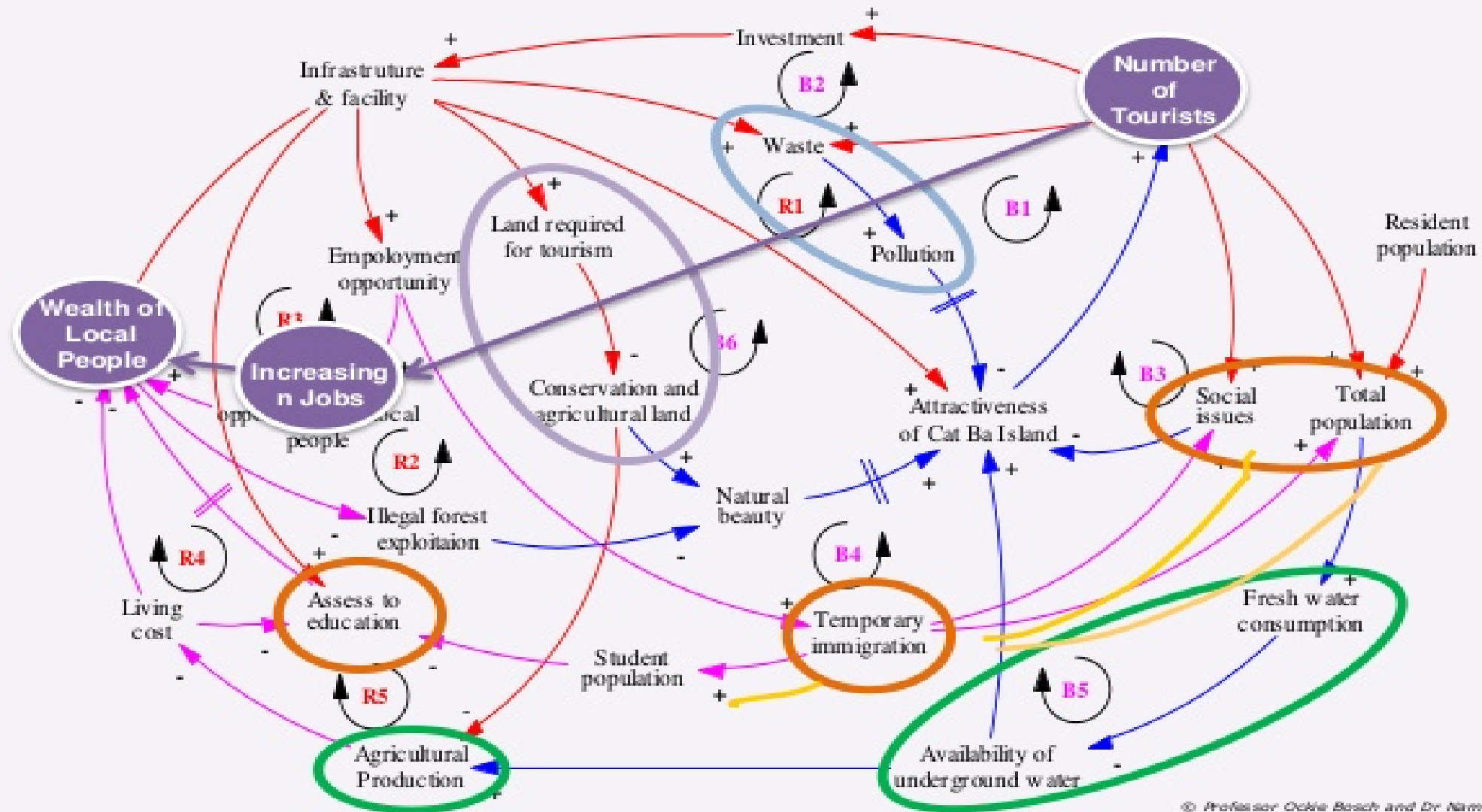
MNI WICONI

BY ISAAC MURDOCH AND CHRISTI BELCOURT



REAL SOLUTIONS

SYSTEMS THINKING



Key Considerations as We Transform Systems

LOCALISM

Access

Economic Justice

Do No Harm

Adaptation



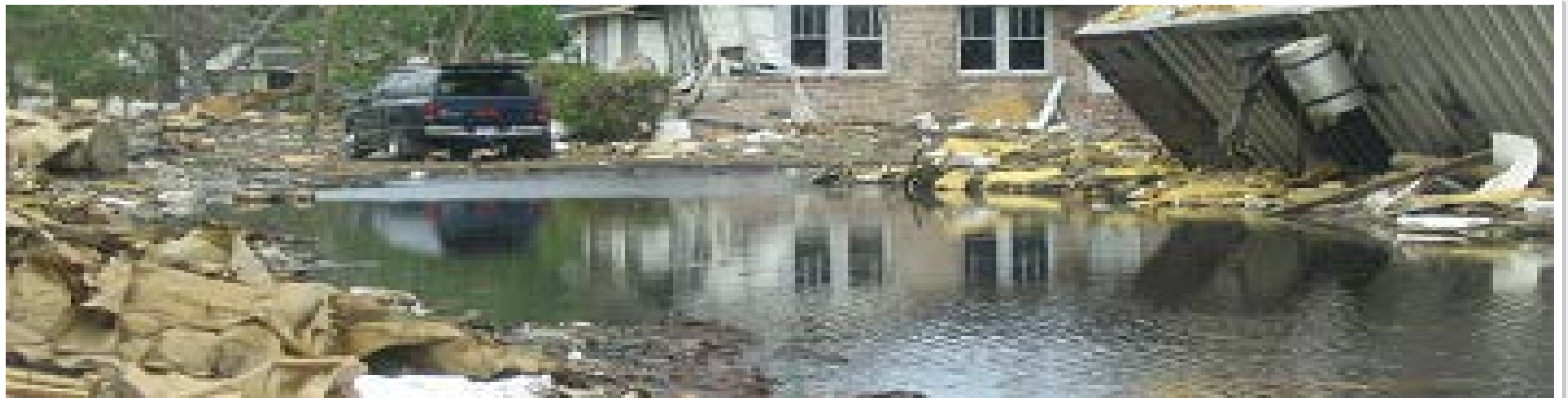
FRONTLINE COMMUNITY LEADERSHIP





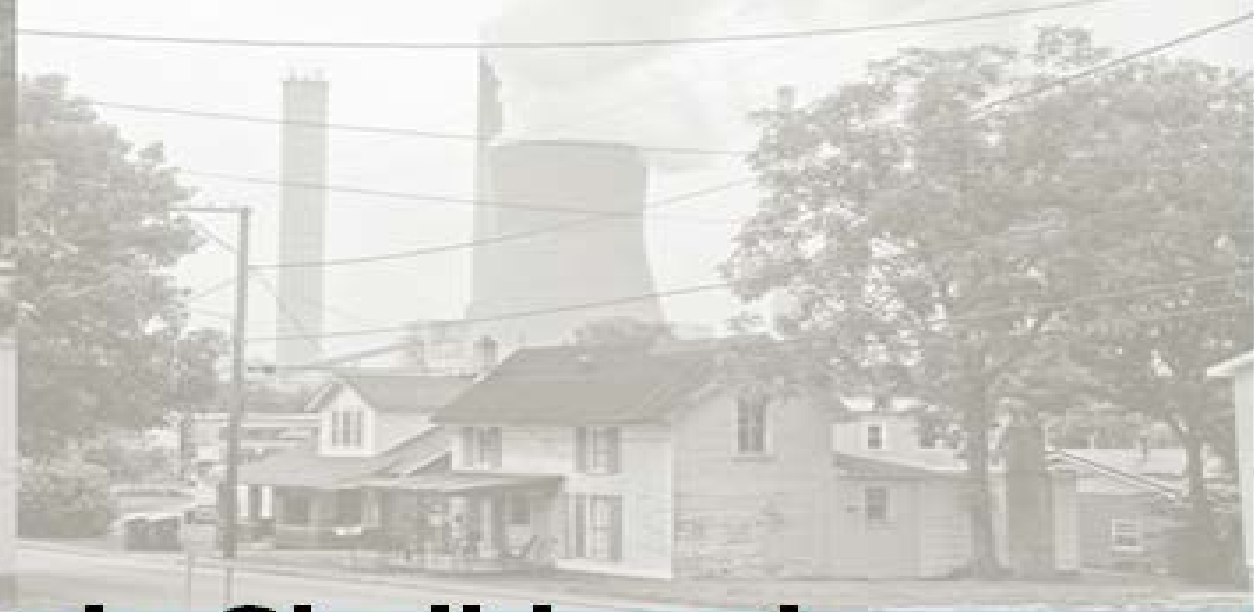
When we stopped in the Inuit community of Arctic Bay on Baffin Island, Jack Willie, manager of the local hunters and trappers organization, told

Those who think they can map out an Arctic future without meaningful consultation with the Inuit are mistaken.



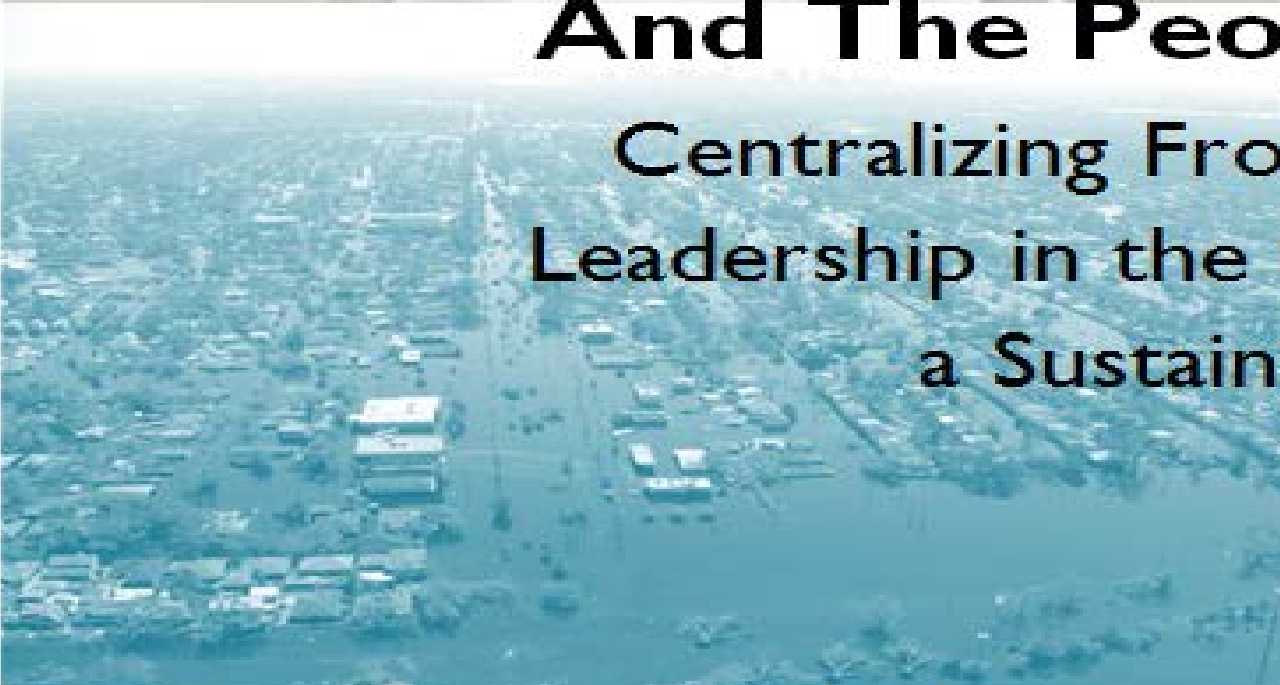
“I’m not interested in any action plan to rebuild/organize a people’s agenda in New Orleans without a gender analysis and a demand for community accountability.”

—Shana Griffin, New Orleans Resident and Gender Justice Activist



And The People Shall Lead:

Centralizing Frontline Community
Leadership in the Movement Towards
a Sustainable Planet



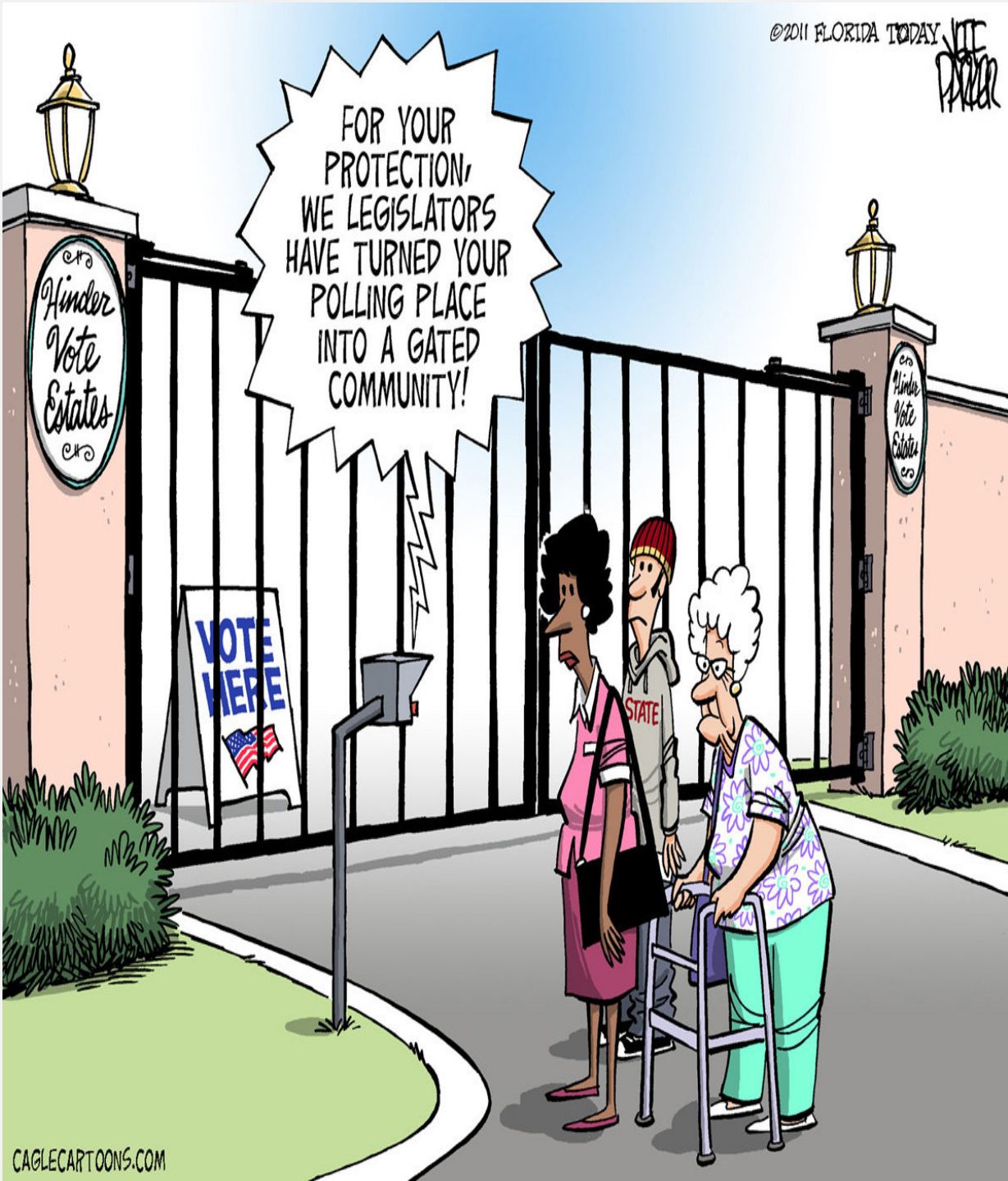
Principles and Practices of Environmental and Climate Justice Movement Building

- **Principles of Environmental Justice**
- <http://www.ejnet.org/ej/principles.html>
- **Jemez Principles for Democratic Organizing**
- <http://www.ejnet.org/ej/jemez.pdf>
- **Bali Principles of Climate Justice**
- <http://www.ejnet.org/ej/bali.pdf>
- **People's Agreement of Cochabamba**
- <http://pwccc.wordpress.com/2010/04/24/peoples-agreement/>
- **Everybody's Movement**
- http://www.yale.edu/divinity/dislocations/documents/everybodysmovement_AngelaPark.pdf
- **Cultivating the Grassroots**
- http://www.ncrp.org/files/publications/Cultivating_the_grassroots_final_lowres.pdf

Jemez Principles of Democratic Organizing

- ❖ Be Inclusive
- ❖ Emphasis on Bottom Up Organizing
- ❖ Work Together in Solidarity and Mutuality
- ❖ Build Just Relationships Amongst Ourselves
- ❖ Commitment to Self-Transformation

Advancing True Democracy



***Systematic Political
Disenfranchisement
Eliminates Inclusive,
Representational Decision
Making***







Advancing Equity Based Transportation
and Goods Movement
Principles and Practices



About

National Civil Rights Campaign

Campaigns

Consent Decree

Stop the Transit Cuts

Clean Air and Economic Justice Plan for Measure R

No Fare Hike

1,000 More Buses, 1,000 Less Police

Student Bus Pass

Drum & Chant Corps

Join Us

Old BRU Website

1,000 More Buses, 1,000 Less Police!

by [Nicole Eng](#) on Friday, February 20, 2009

Mayor Villaraigosa: More Police Is Not a Progressive Vision for L.A.

Hiring 1000 additional police officers has become a top city budget priority under Mayor Villaraigosa. In 2008, the Mayor announced he was halfway to keeping his campaign pledge of 1000, even as he was moving to cut \$100 million from the city budget.

1000 More Buses, 1000 Less Police calls on the Mayor to make a complete U-turn to fund social services, not criminalization.

1,000 Less Police!

Given his long history in the movement for civil rights and human rights, we know the Mayor is well aware of the way class and race intersect to create a racially based prisoners' class in L.A.:

- There are more than 2.3 million prisoners in the United States.
- Close to 1 million of the prisoners are Black, more than 500,000 are Latino, and virtually all of them poor.
- The L.A. region has the highest arrest rate in the country.

1,000 more police will only expand and intensify these systemic civil and human rights violations. They will not make our communities safer or healthier.

And yet Mayor Villaraigosa's actions and policies have also included lobbying in Washington, DC and Sacramento to support more funding to suppress gangs, imposing harsher sentences for Latino and Black youth by labeling many "gang members." He has stayed silent as the local police have expanded into immigration enforcement using "Tough On Gangs" initiatives. In Los Angeles, the Mayor has supported initiatives that criminalize the youth and their families, and that



STOP MTA'S TOXIC FARE INCREASE

**STOP THE U.S. AND L.A.'S
ATTACK ON THE PLANET**

NO CARS IN LA!

**MAY 22ND AT 9 AM • RALLY AT MTA
1 GATEWAY PLAZA • L.A. • 90012**

FIGHTFORTHESOULOFTHECITIES.COM 213-387-2800



Thank You

Jacqui Patterson

jpatterson@naacpnet.org

@jacquipatt

443-465-9809